

Bussole estraibili

Removable bushes

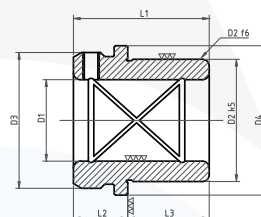
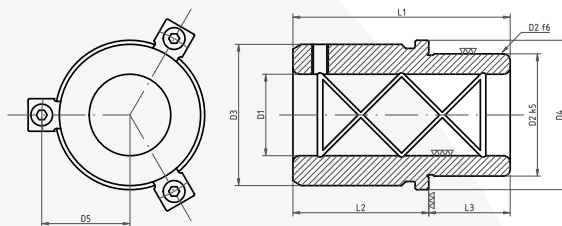
MADE IN ITALY



Materiale Material : 1.7131
Durezza Hardness : HRC 61/63

Esempio di ordinativo con nostro codice
Example of purchase order using our code

Bussole estraibili Removable bushes	Codice Code	Materiale Material	Misure Measures
25 x 40	1BU	E	25040
63 x 110	1BU	E	63110



D1 g5	D2	D3	D4	D5	L2	L3	L1	
25	40	37	45	25.5	15	25	40	•
		42			45		70	•
30	45	47	55	32.5	20	30	50	•
		52			50		80	•
40	55	57	65	37.5	20	35	55	•
		62			55		90	•
50	70	72	79	44.5	20	45	65	•
		77			55		100	•
63	81	84	92	51	20	48	68	•
		90			62		110	•

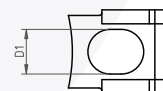
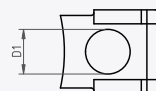
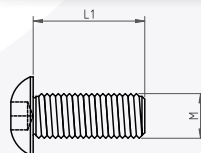
Staffette e viti di fissaggio per colonne e bussole estraibili

Fastening clamps and screw for pillars and removable bushes



Esempio di ordinativo con nostro codice
Example of purchase order using our code

Viti / Staffe per fissaggio Screw / Fastening clamps	Codice Code	Materiale Material	Misure Measures
6 x 15	3VI	TBCE	0615
ø 6	3ST	FC	06



Foro cilindrico
Cylindrical hole

Foro asola
Buttonhole



Viti Screws		Staffa foro cilindrico Clamp with cylindrical hole		Staffa foro asola Clamp with buttonhole	
		D1		D1	
M 6x15	•	6	•		
M 8x20	•	8	•	8x10	•