

## Bussole con collare tipo "C" con foro cilindrico e conico

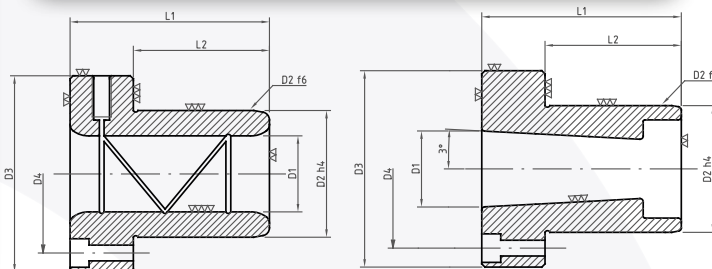
Type "C" bushes with collar and cylindrical or conical hole



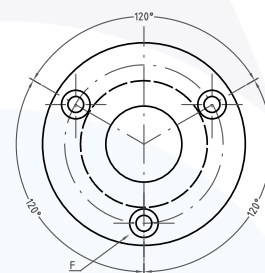
Materiale Material : 1.7131  
Durezza Hardness : HRC 61/63

Esempio di ordinativo con nostro codice  
Example of purchase order using our code

Bussole tipo C Type C bushes	Codice Code	Materiale Material	Misure Measures
Cilindriche Cylindrical $\varnothing$ 24	1BUC	CIL	24
Coniche Conical $\varnothing$ 51	1BUC	CON	51



D1	D2	D3	D4	L2	L1 <sup>+0</sup> / <sub>-0.2</sub>	F	
24/25	40	63	50	43	63	5 MA	•
30/31	48	72	58	47	72	6 MA	•
40/41	58	83	70	52	80	8 MA	•
50/51	70	103	86	58	100		•
63	85	120	100	57	99		•



## Bussole con collare tipo "C" con guida in bronzo

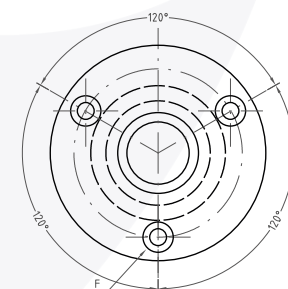
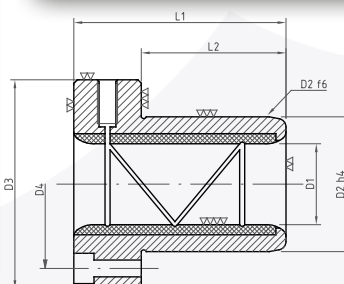
Type "C" bushes with collar and bronze guide



Materiale Material : 1.7131  
Durezza Hardness : HRC 52/54

Esempio di ordinativo con nostro codice  
Example of purchase order using our code

Bussole tipo C in bronzo Type C bronze bushes	Codice Code	Materiale Material	Misure Measures
Cilindriche Cylindrical $\varnothing$ 30	1BUC	CILB	30
Cilindriche Cylindrical $\varnothing$ 63	1BUC	CILB	63



D1	D2	D3	D4	L2	L1 <sup>+0</sup> / <sub>-0.2</sub>	F	
24/25	40	63	50	43	63	5 MA	•
30/31	48	72	58	47	72	6 MA	•
40/41	58	83	70	52	80	8 MA	•
50/51	70	103	86	58	100		•
63	85	120	100	57	99		•

MADE IN ITALY